

# MONTHLY MEMBERSHIP PROGRESS REPORT

LOCATION INDIA

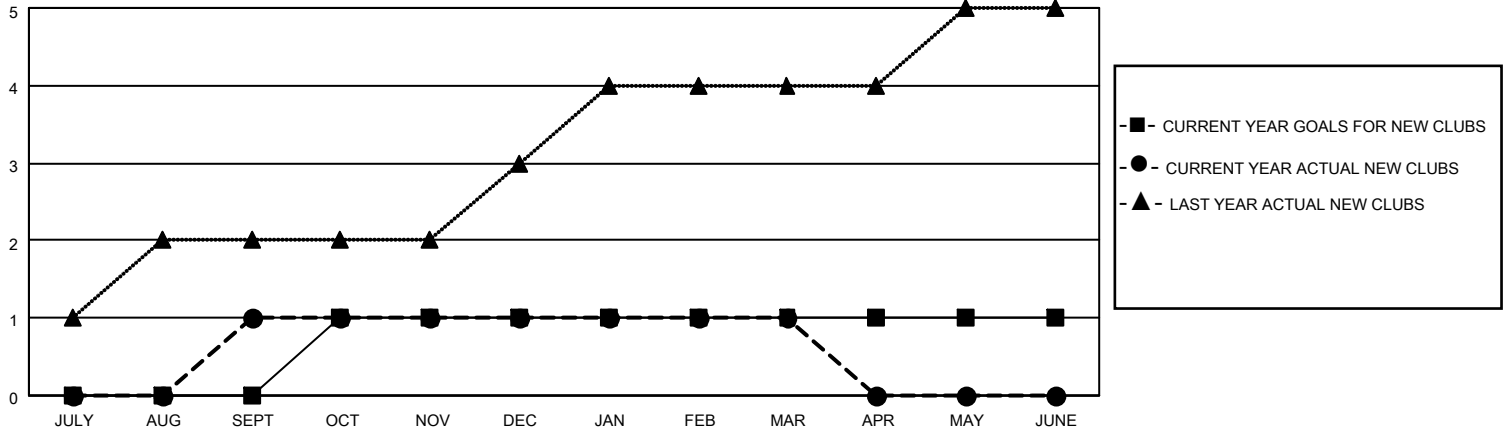
District 3232F2

Results as of: 3/31/2022

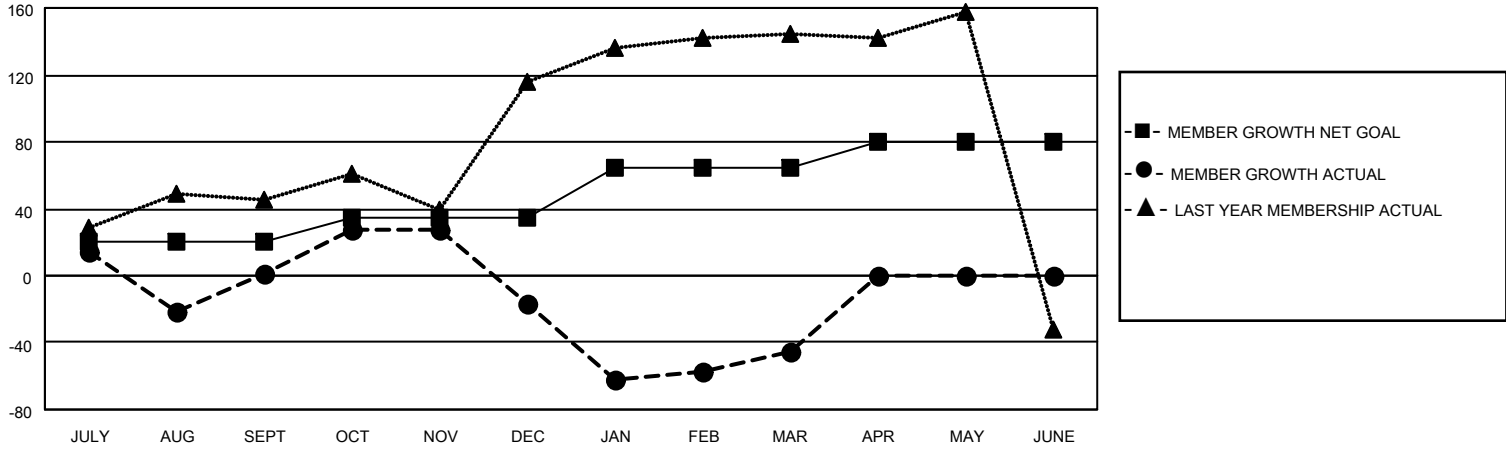
Clubs			
RESULTS FOR 2021-2022			
QUARTER	NEW CLUB GOAL	NEW CLUBS	DROPPED CLUBS
JULY/AUG/SEPT	0	1	3
OCT/NOV/DEC	1	0	0
JAN/FEB/MAR	0	0	1
APR/MAY/JUNE	0	0	0

Members			
RESULTS FOR 2021-2022			
QUARTER	MEMBER GROWTH NET GOAL	MEMBER GROWTH ACTUAL	DROPPED MEMBERS ACTUAL (including transfers)
JULY/AUG/SEPT	20	98	94
OCT/NOV/DEC	15	84	101
JAN/FEB/MAR	30	94	106
APR/MAY/JUNE	15	0	0

**GOALS AND ACTUAL NEW CLUBS CUMULATIVE**



**GOALS AND ACTUAL MEMBERS CUMULATIVE**



<b>DROPPED CLUBS: 4</b>	
<b>DROPPED MEMBERS</b>	
DECEASED	7
CLUB CANCELLED	115
OTHER	179
<b>TOTAL</b>	<b>301</b>

43 CLUBS OF 79 ADDED 1 OR MORE NEW MEMBERS

[CLICK HERE FOR CUMULATIVE MEMBERSHIP DATA](#)

<u>GENDER DISTRIBUTION</u>	
MALE	1,776 (62.56%)
FEMALE	1,062 (37.41%)
NON BINARY	0 (0.00%)
PREFER NOT TO ANSWER	1 (0.04%)
<b>TOTAL FAMILY UNIT MEMBERS</b>	<b>1,971</b>
<b>FAMILY MEMBERS PAYING HALF DUES</b>	<b>1,258</b>